

Direct Link Race Performance / Refresh

File Edit Table View Communications System Help

Open Calibration **Original** Modified

Open Specification

Open Calibration

Where Manufacturer

Open Log

Export

Print

Download Data

Exit

Single Pass

Calibrated Race

Test Results

Performance Results

Calibration Information

File Name

Part ID

Calibration ID

Refresh Steps

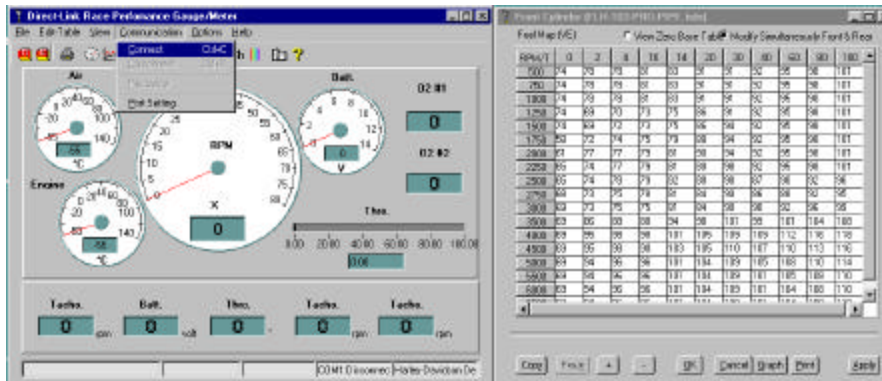
0 10 20 30 40 50 60 70 80 90 100

COM1 Disconnects

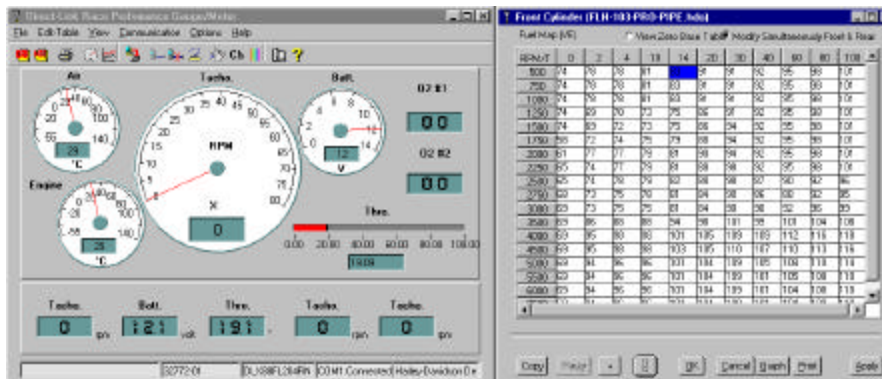
Malley-Diamond Display

The screenshot shows the 'Open File' dialog box in the COMET Professional Edition software. The dialog has a 'Warning' section at the top, a 'Look in' field set to 'Fluke-Default', and a list of files. The file 'FLH100PWR.PWR' is selected. Below the file list, the 'File name' field contains 'FLH100PWR.PWR' and the 'Files of type' is set to 'Files (*.*)'. The 'Load' and 'Cancel' buttons are visible at the bottom right.

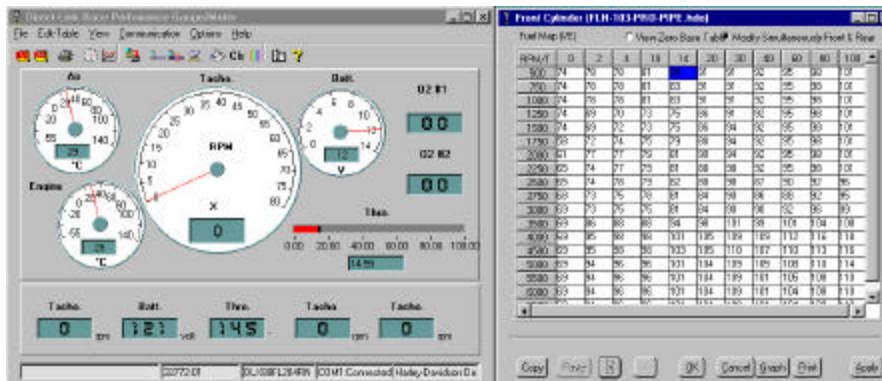
Rearrange the front and rear map. Go to view and Select Gages/Meter



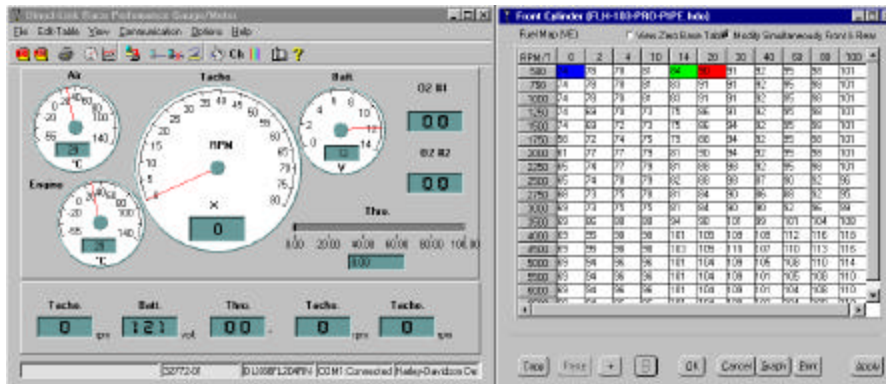
Go to Communication and select connect



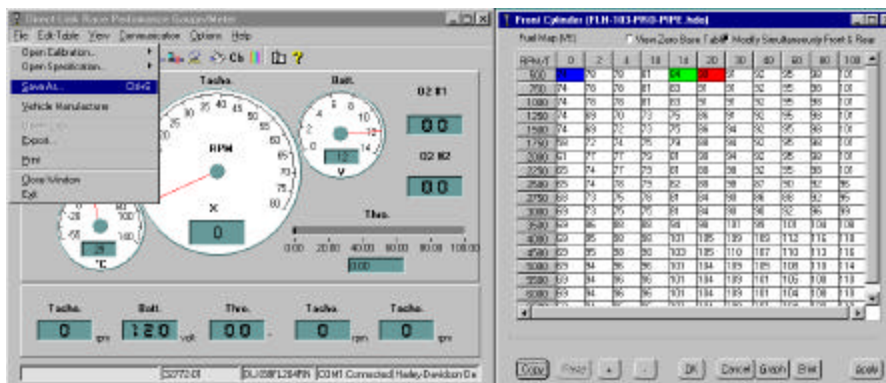
As you are revving the Bike the tracer will be moving in the Front & Rear Map



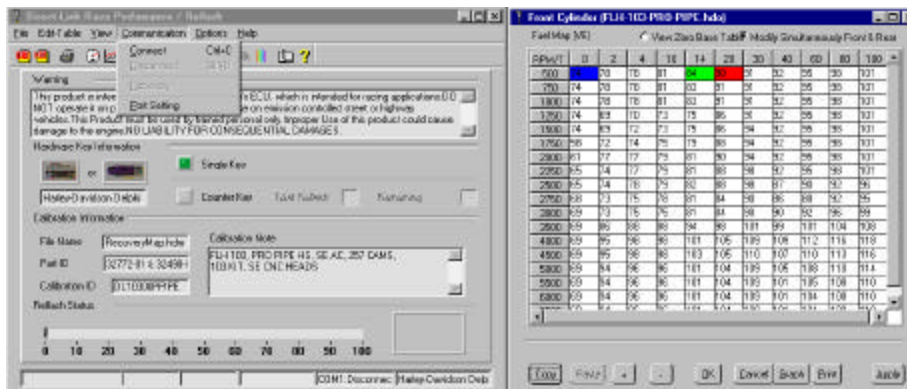
You can know change the value by clicking once on the cell and then use the + (reach) and - (Lean) to modify the value



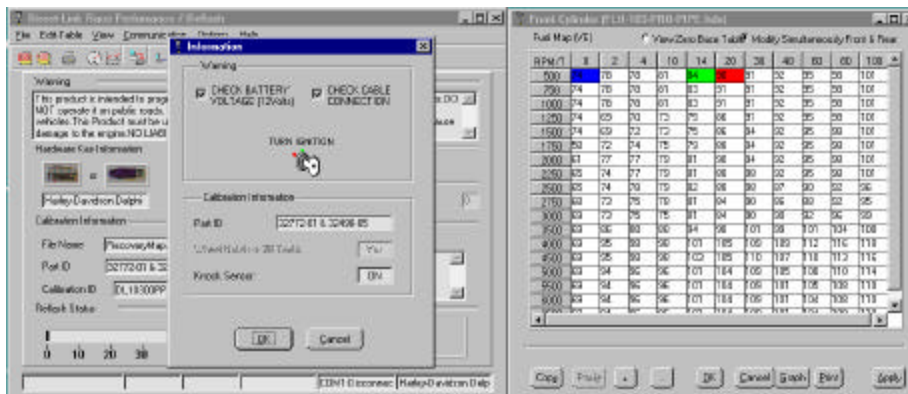
When you make changes to the cell if the color becomes green the original value is becoming Rich if the cell becomes red the original value is becoming Lean.



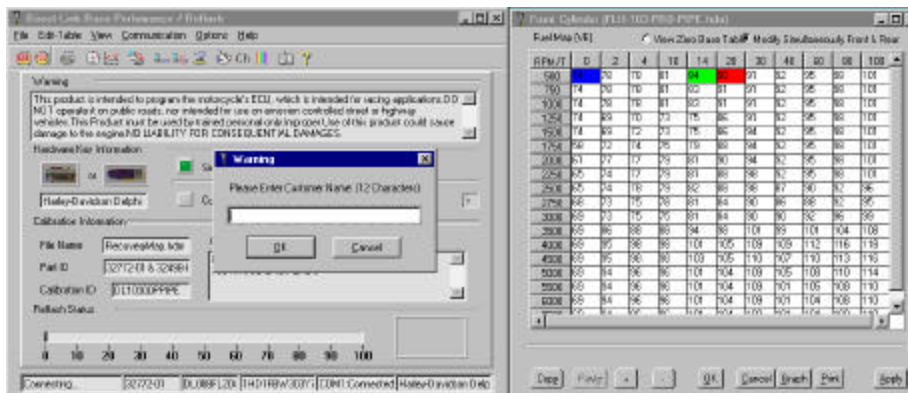
After making the changes to the map, Go to File and select Save As and save the file for future use.



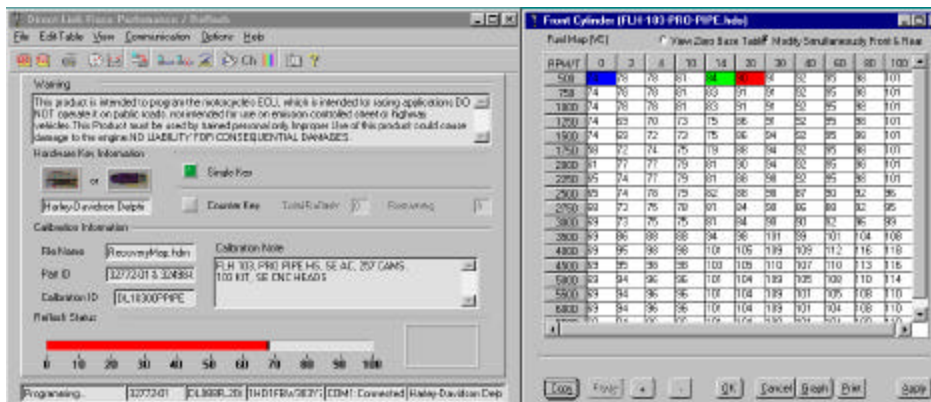
Go to Communication and Select Connect



A message will popup and select OK



Another message will popup asking to enter the name of the Bike owner



The ECU/ECM is been reprogrammed.

